

## Registration



Name \_\_\_\_\_

Organization / Institution / Faculty \_\_\_\_\_

Address \_\_\_\_\_

City, Province \_\_\_\_\_

Postal Code \_\_\_\_\_

Phone # \_\_\_\_\_

email \_\_\_\_\_

\$45       \$20 student /  
low income

Visa       MasterCard

Cheque

Credit Card # \_\_\_\_\_

Expiry \_\_\_\_\_ / \_\_\_\_\_

Signature \_\_\_\_\_

Registration includes all sessions,  
Tuesday Keynote and reception, Lunch  
Wednesday, and Whose Boom? Wealth,  
Health and Inequality

Send to:  
Parkland Institute  
11045 Saskatchewan Drive  
Edmonton, AB T6G 2E1

Call: (780) 492-8558  
Fax: (780) 492-8738  
Email: [parkland@ualberta.ca](mailto:parkland@ualberta.ca)  
[www.ualberta.ca/parkland](http://www.ualberta.ca/parkland)

After February 1, 2007, contact  
Parkland to confirm space availability.

## Canadian Institutes of Health Research (CIHR)

Canadian Institutes of Health Research is the major federal agency responsible for funding health research in Canada. It aims to excel in the creation of new health knowledge, and to translate that knowledge from the research setting into real world applications. The results are improved health for Canadians, more effective health services and products, and a strengthened Canadian health care system. Composed of 13 Institutes, CIHR supports more than 9,000 researchers and researchers in training as part of the federal government's investment in health research.

The conference would also like to acknowledge the generous support of the Centre for Health Promotion Studies, School of Public Health, the University of Alberta, and the University of Alberta Bookstore.



## The Parkland Institute: "research and education for the common good since 1996"

Parkland Institute is a public policy research network housed in the Faculty of Arts, University of A and is very pleased to be hosting this conference.

The Parkland is committed to the dialogue and enlightened debate that is the heart of healthy democracy. Parkland sponsors research, conferences, public events and provides media commentary and analysis to fuel this debate. Within post-secondary institutions, Parkland Institute includes those who are involved in interdisciplinary and socially-engaged thinking. In the broader Alberta community, Parkland Institute works with religious organizations, professionals, trade unionists, the arts community, non-profit organizations, environmentalists, feminists, social movement activists, private sector individuals and other interested individuals.

Parkland's most recent work has been on health care policy, energy policy and Alberta's budget.



For more information:  
Parkland Institute (780) 492-8558  
[parkland@ualberta.ca](mailto:parkland@ualberta.ca)  
[www.ualberta.ca/parkland/forgotten](http://www.ualberta.ca/parkland/forgotten)

## Forgotten Families

Globalization and the Health of Canadians



February 6 - 8, 2007

Lister Conference Centre  
University of Alberta

## Globalization and the Health of Canadians



This conference launches a research network on Globalization and the Health of Canadians. Despite an extensive body of research on globalization, Canada lacks a critical mass of expertise on how to respond to globalization's health impacts within our borders.

In 2006, Canadian Institutes of Health Research awarded a five-year Interdisciplinary Capacity Enhancement grant to a team of researchers from ten Canadian universities, many of whom will speak at the conference. Their work emphasizes that population health is affected by much more than just health care, and will focus on improving Canadians' understanding of how globalization affects social determinants of health for low-income families with children in Canada's major metropolitan areas. In addition, team members will identify best social policy practices from the experiences of other countries and explore Canada's policy options for the future.

### Parkland Institute Event Whose Boom? Wealth, Health and Inequality



**Wednesday, February 7,  
7:30 pm**

Armine Yalnizyan and  
Diana Gibson, Parkland Institute

Everyone Welcome

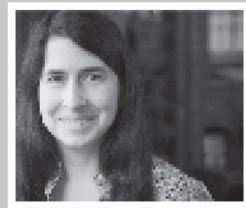
All events will be held at Lister Conference Centre  
87 Avenue & 116 Street

A conference for researchers,  
students and the public



**Tuesday, February 6, 7:00 pm**

### Keynote Speaker



Jody Heymann: *Forgotten Families: Ending the Growing Crisis Confronting Children and Working Parents in the Global Economy.*

Jody Heymann M.D., Ph.D., holds a Canada Research Chair in Global Health and Social Policy at McGill University where she is the founding director of a university-wide Institute for Health and Social Policy, and a Professor of Political Science and Epidemiology. The founder and director of the Project on Global Working Families at Harvard University, Heymann is also author of *The Widening Gap: Why America's Working Families Are in Jeopardy and What Can Be Done About It* (Basic Books, 2000), among other books.

**Reception to follow**

**Wednesday, Feb 7, 9 – 5 pm / Thursday, Feb 8, 9 - noon**

**Introduction:** Ronald Labonte, University of Ottawa

### Globalism and its Challengers

James Goodman, University of Technology, Sydney, Australia  
Asbjorn Wahl, Save the Welfare State, Norway  
Maria Teresa Gutierrez-Haces, University of Mexico (invited)  
Satoshi Ikeda, University of Alberta

### Health and Place in Canada

Lisa Votta, Canadian Population Health Initiative, Ottawa

### Health in low-income neighbourhoods - Vancouver, Montréal, Greater

**Toronto Area:** Karen Murray, York University, Michael Orsini, University of Ottawa, Judith McKenzie, University of Guelph

### Saskatoon: a bottom-up approach to global health research

Nazeem Muhajarine and Jennifer Cushon, University of Saskatoon

### Economics and health in Montréal

Representative of Centre Léa-Roback, Montréal

### Markets, social policy & household income: Alberta

Armine Yalnizyan, Community Social Planning Council of Toronto

### “Food deserts” and Urban Health

Elizabeth Kristjansson, University of Ottawa

**Closing:** Nancy Ross, McGill University, Montréal

“  
a powerful and overdue  
wake-up call about the  
enormous challenges and  
awful choices working  
families around the world  
face. We can and must do  
better for all of our children.



Marian Wright Edelman,  
Children's Defense Fund

